



2311 Green Road

Ann Arbor, MI



State-of-the-Art Lab & Office Space | Purpose-Built for Innovation

This premier laboratory and office environment is designed to support cutting edge research and scalable growth. Ideal for biotech, R+D and health tech companies.

Located near the University of Michigan North Campus Research Complex, Toyota R + D and KLA, this site offers unmatched access to research partners and top-tier talent making it a strategic choice for forward thinking companies ready to scale scientific impact in a thriving innovation corridor.

This location also enjoys excellent access to I-94, US-23, and M-14, Detroit Metro Airport, and Ann Arbor's vibrant cultural scene as well as neighborhood amenities and housing.

Contact us for a tour and additional information. (734) 994-5050
firstmartin@firstmartin.com

Scan to Tour



Features

- Power: 600 Amp/240 Volts – Heavy-duty electrical capacity
- Labconco ducted fume hood & enclosure
- Eyewash Station
- (6) Fully Functional Laboratories
- Dedicated Equipment Rooms
- Integrated Office Space
- Fiber Connectivity
- Ample Parking
- Multiple Signage Opportunities
- Well Capitalized Owner
- On-site Management

Space Available

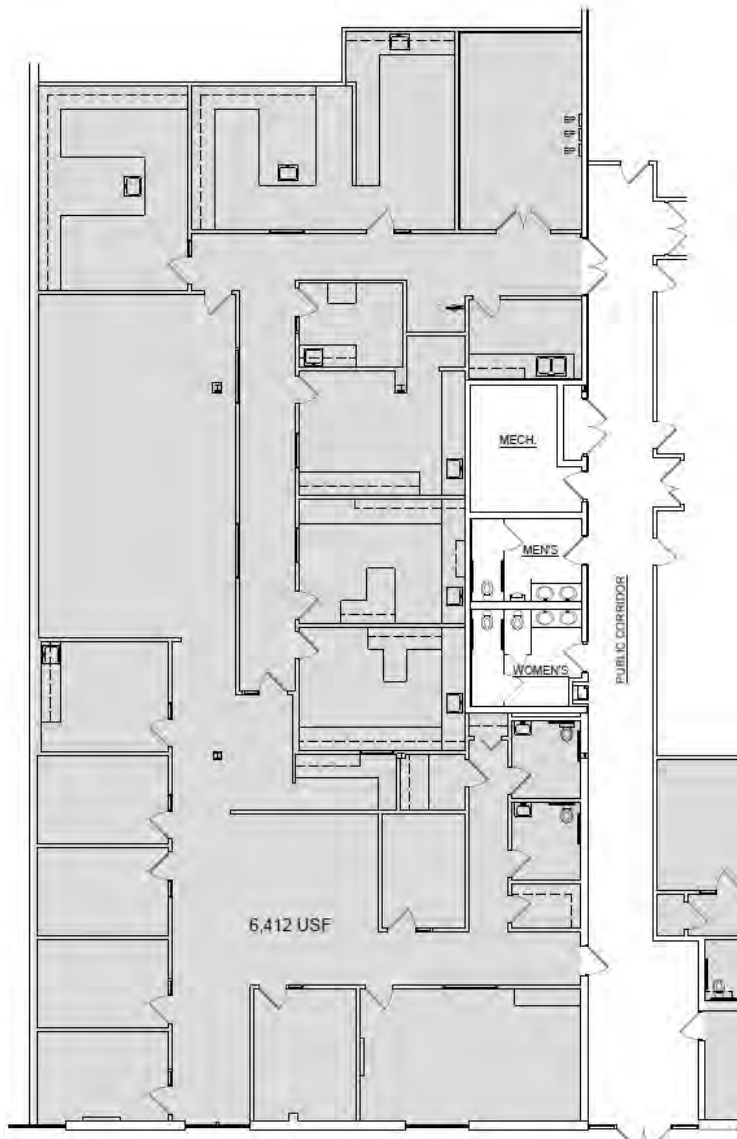
- 6,412 SF

Ann Arbor Innovation District (A2ID) Amenities

- Pickleball Court
- Outdoor Central Commons Picnic Area with WiFi and Power Outlets
- A2ID Tenants Enjoy Unlimited Access to the 2100 Commonwealth Fitness Center



2311 Green Road



WE ARE
HERE.

First Martin is a full-service commercial real estate firm with an approach focusing on both the big picture and the small details, helping Ann Arbor remain vibrant. We invest in our relationships, balancing a decades-long view of real estate development with service in minutes.

Get in touch today to explore our portfolio of available commercial properties. Visit us at firstmartin.com to view all properties.



2311 Green Road



WE ARE
HERE.

First Martin is a full-service commercial real estate firm with an approach focusing on both the big picture and the small details, helping Ann Arbor remain vibrant. We invest in our relationships, balancing a decades-long view of real estate development with service in minutes.

Get in touch today to explore our portfolio of available commercial properties. Visit us at firstmartin.com to view all properties.