



Michigan House

2301 Commonwealth Blvd, Ann Arbor, MI

2301 Commonwealth Blvd. is a two story brick office facility with an atrium lobby. The building's contemporary architecture and lush landscaping provide modern executive offices in Plymouth Park, the heart of Ann Arbor's research corridor.

Located off Plymouth Road in northeast Ann Arbor, ½ mile from US-23 and an easy commute from metropolitan Detroit. Over 325,000 SF in eight buildings make up Plymouth Park.

**Contact us for a tour and additional information. (734) 994-5050
firstmartin@firstmartin.com**

Features

- Ample Garage and Surface Parking
- Natural Light Throughout
- Operable Windows
- On Site Management
- Well Capitalized Owner

Space Available

- Up to 36,390 SF

Plymouth Park Amenities

- Pickleball Court
- Pond Seating and Picnic Area with Outdoor WiFi

Area Amenities

- Anytime Fitness
- Sweetwaters Coffee & Tea
- Plum Market
- CVS
- Busch's Fresh Food Market
- BeWon Korean
- Zamaan Café
- Mark's Midtown Coney Island
- United States Postal Service
- The UPS Store

First Martin

CORPORATION

CALL
734.994.5050

EMAIL
firstmartin@firstmartin.com

FAX
734.761.6151

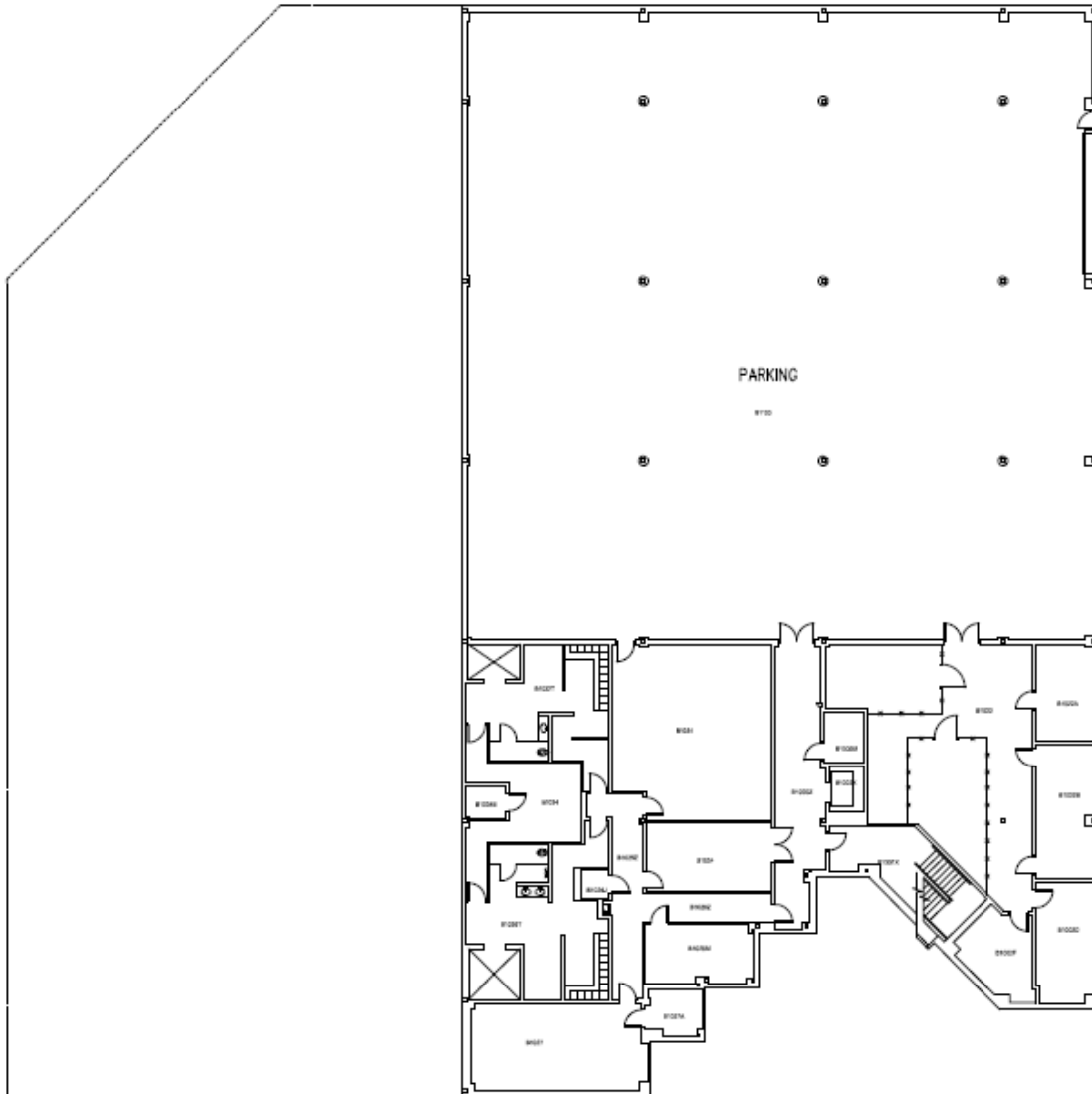
115 Depot Street
Ann Arbor, MI 48104



WE ARE
HERE.

First Martin is a full-service commercial real estate firm with an approach focusing on both the big picture and the small details, helping Ann Arbor remain vibrant. We invest in our relationships, balancing a decades-long view of real estate development with service in minutes.

Get in touch today to explore our portfolio of available commercial properties. Visit us at firstmartin.com to view all properties.

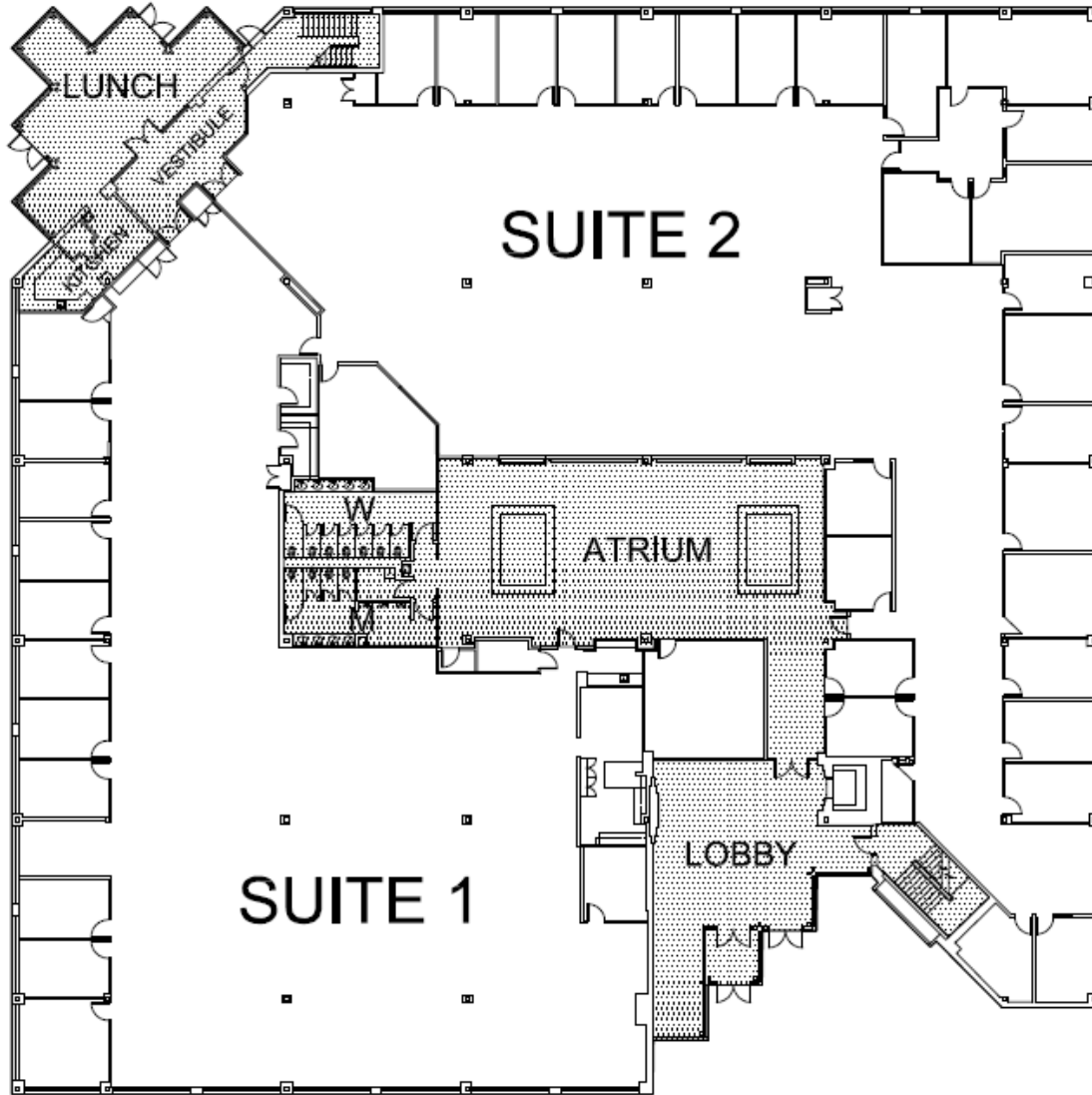


2301 Commonwealth Blvd., Lower Level and Parking

WE ARE
HERE.

First Martin is a full-service commercial real estate firm with an approach focusing on both the big picture and the small details, helping Ann Arbor remain vibrant. We invest in our relationships, balancing a decades-long view of real estate development with service in minutes.

Get in touch today to explore our portfolio of available commercial properties. Visit us at firstmartin.com to view all properties.



2301 Commonwealth Blvd., Level 1

WE ARE
HERE.

First Martin is a full-service commercial real estate firm with an approach focusing on both the big picture and the small details, helping Ann Arbor remain vibrant. We invest in our relationships, balancing a decades-long view of real estate development with service in minutes.

Get in touch today to explore our portfolio of available commercial properties. Visit us at firstmartin.com to view all properties.

