



## 2200 Commonwealth Blvd.

Third Floor Suite, Ann Arbor, MI

2200 Commonwealth Blvd. is a three story brick office facility with a full glass atrium entrance. The building's contemporary architecture and lush landscaping provide modern executive offices in Plymouth Park, the heart of Ann Arbor's research corridor.

Located off Plymouth Road in northeast Ann Arbor, ½ mile from US-23, walking distance to Sweetwaters Coffee and Anytime Fitness, and an easy commute from metropolitan Detroit. Over 325,000 SF in eight buildings make up Plymouth Park.

### Features

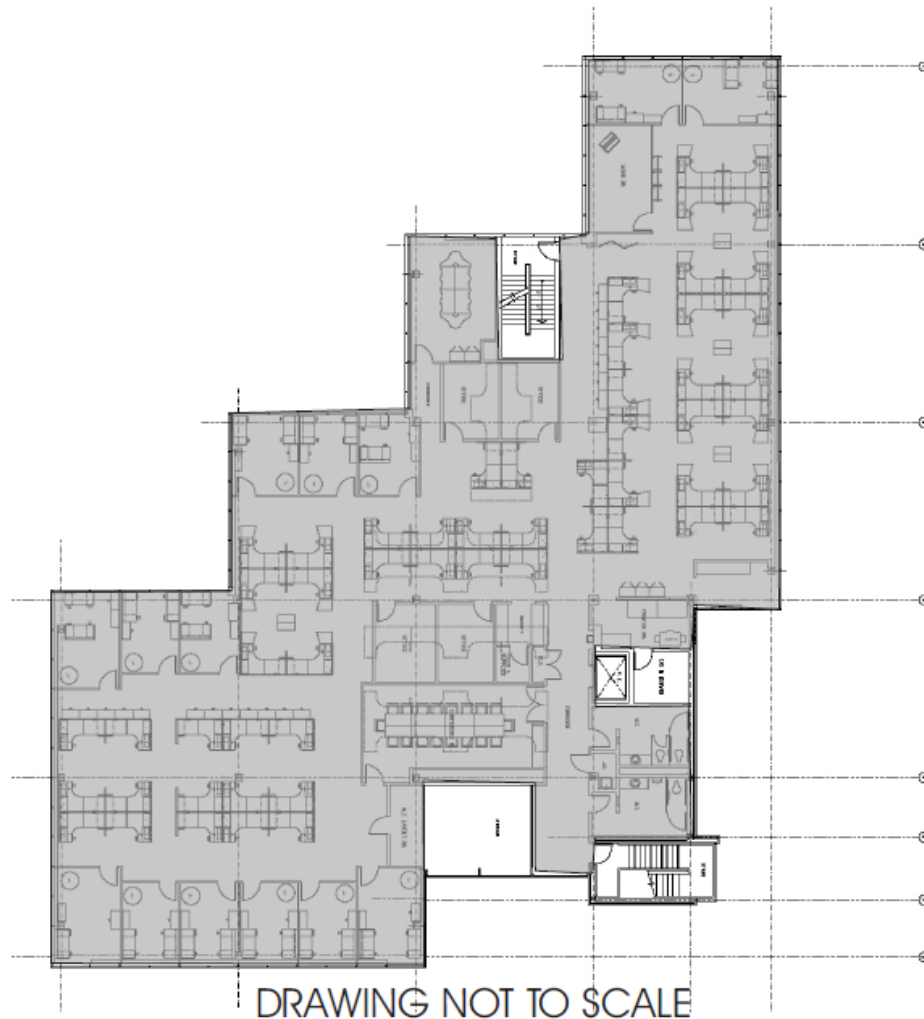
- Entire Third Floor
- Ample Parking
- Natural Light throughout

### Space Available

- 11,320 SF
- Available July 2022

Contact us for a tour and additional information. (734) 994-5050  
firstmartin@firstmartin.com

EXHIBIT A



**2200 Commonwealth Blvd., 3<sup>rd</sup> Floor Suite**  
**11,320 SF**

WE ARE  
HERE.

First Martin is a full-service commercial real estate firm with an approach focusing on both the big picture and the small details, helping Ann Arbor remain vibrant. We invest in our relationships, balancing a decades-long view of real estate development with service in minutes.

Get in touch today to explore our portfolio of available commercial properties. Visit us at [firstmartin.com](http://firstmartin.com) to view all properties.