



## 2001 Commonwealth

Suite 300-301, Ann Arbor, MI

2001 Commonwealth Boulevard is a three-story brick office facility with a full glass atrium entrance. The building's contemporary architecture and lush landscaping provide modern executive offices in Plymouth Park, the heart of Ann Arbor's research corridor.

Located off Plymouth Road in northeast Ann Arbor, ½ mile from US-23, walking distance to Sweetwaters Coffee and Anytime Fitness, and an easy commute from metropolitan Detroit. Over 325,000 SF in eight buildings make up Plymouth Park.

### Features

- Operable Windows
- Ample Parking

### Space Available

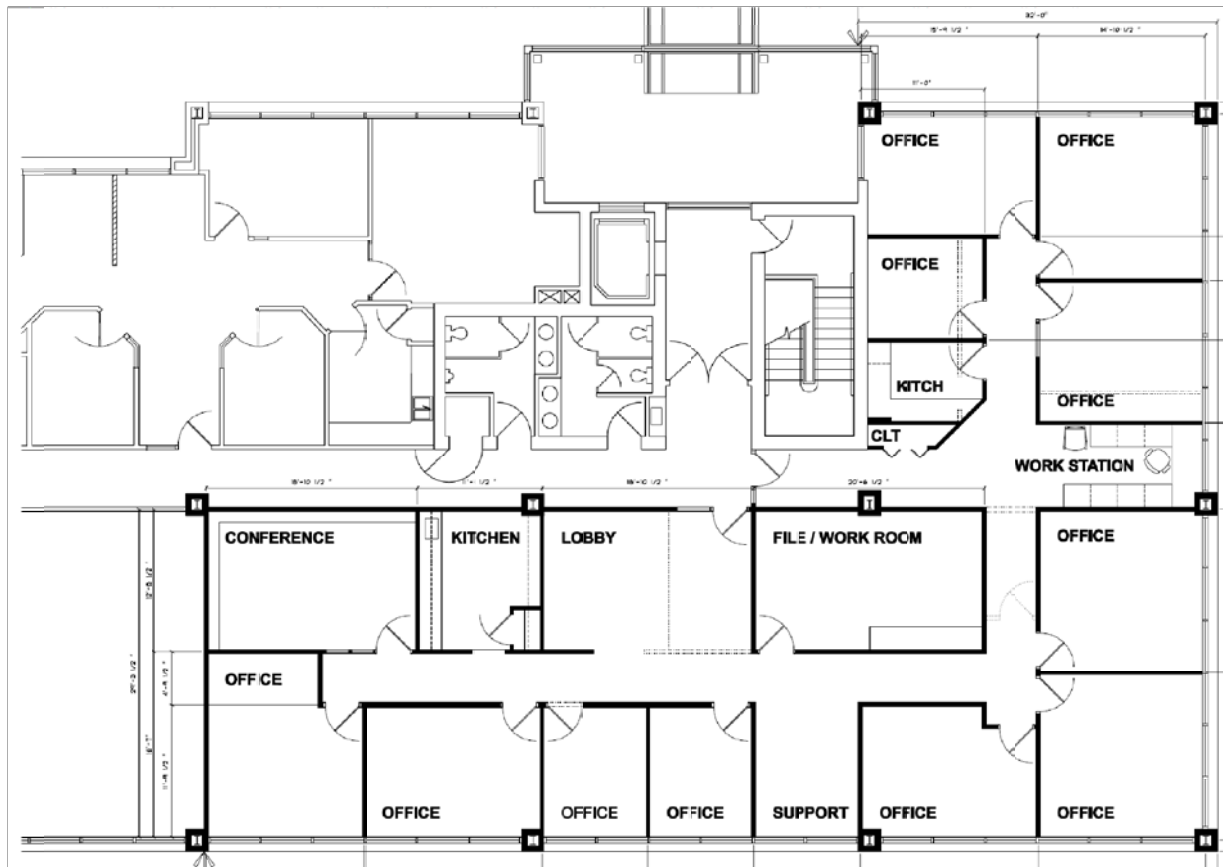
#### Suite 300-301

USF: 3,597

RSF: 4,107

Suite can be divided

Contact us for a tour and additional information. (734) 994-5050  
firstmartin@firstmartin.com



**Combined Suite 300-301**  
USF: 3,597  
RSF: 4,107

**2001 Commonwealth, Suite 300-301**

WE ARE  
HERE.

First Martin is a full-service commercial real estate firm with an approach focusing on both the big picture and the small details, helping Ann Arbor remain vibrant. We invest in our relationships, balancing a decades-long view of real estate development with service in minutes.

Get in touch today to explore our portfolio of available commercial properties. Visit us at [firstmartin.com](http://firstmartin.com) to view all properties.