



2311 Green Road

Ann Arbor, MI

2311 Green Road, located in Plymouth Park, is a 90,000 SF single story, multi-tenant office and research building.

Plymouth Park, the heart of Ann Arbor's research corridor. This 43-acre office and research development is located on Plymouth Road in northeast Ann Arbor, ½ mile from US-23 and an easy commute from metropolitan Detroit. Over 325,000 SF in eight buildings make up Plymouth Park.

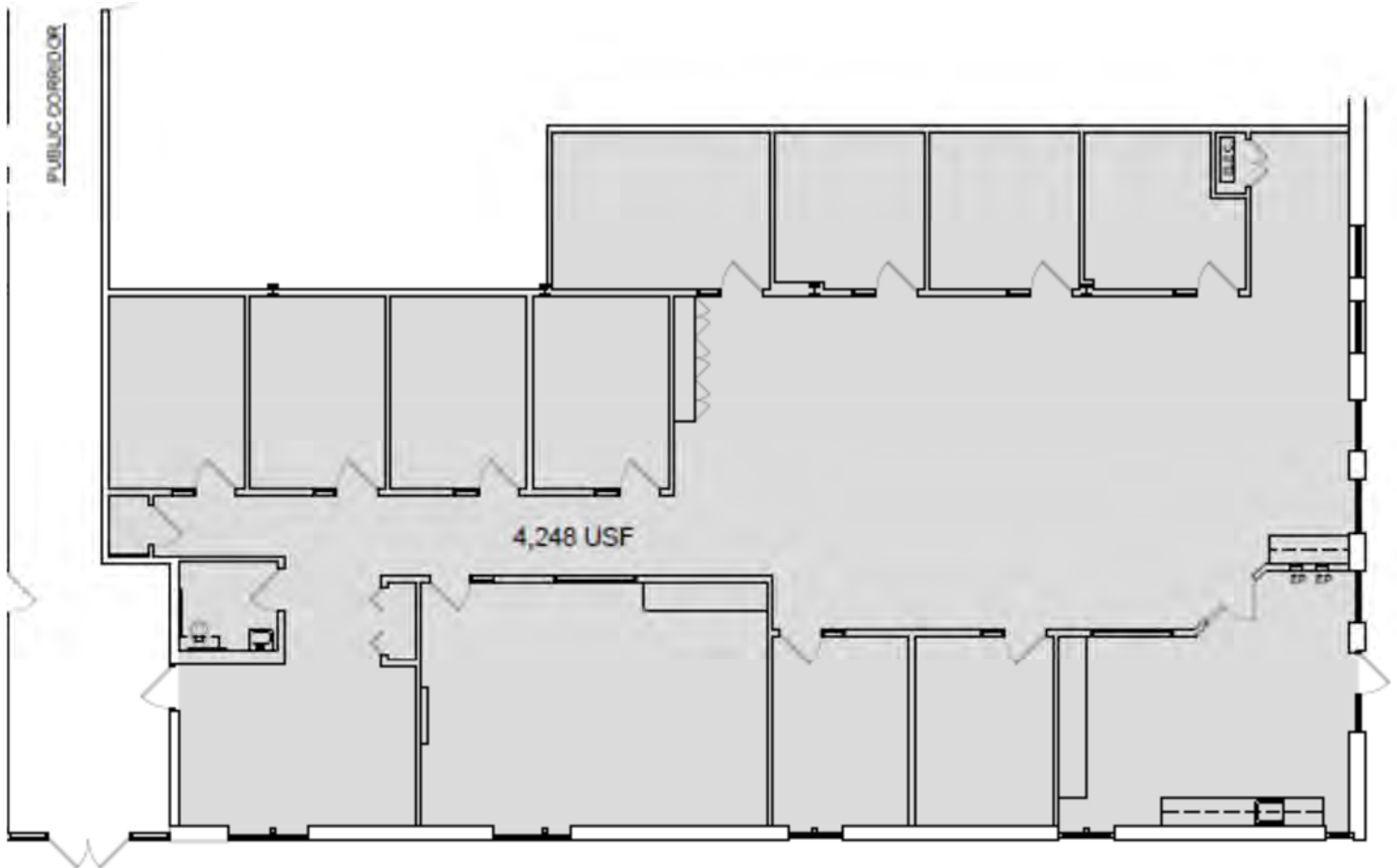
**Contact us for a tour and additional information. (734) 994-5050
firstmartin@firstmartin.com**

Features

- Ample Parking
- Multiple Signage Opportunities
- Well Capitalized Owner
- On-site Management
- Private Outdoor Patio

Space Available

- 4,248 USF/4,673 RSF



2311 Green Road
4,248 USF/4,673 RSF

WE ARE
HERE.

First Martin is a full-service commercial real estate firm with an approach focusing on both the big picture and the small details, helping Ann Arbor remain vibrant. We invest in our relationships, balancing a decades-long view of real estate development with service in minutes.

Get in touch today to explore our portfolio of available commercial properties. Visit us at firstmartin.com to view all properties.

First Martin

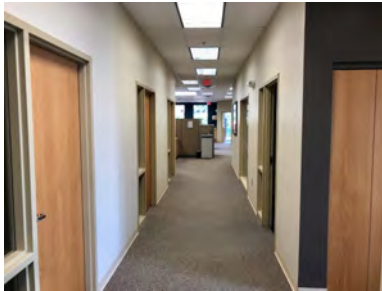
CORPORATION

CALL
734.994.5050

EMAIL
firstmartin@firstmartin.com

FAX
734.761.6151

115 Depot Street
Ann Arbor, MI 48104



2311 Green Road

WE ARE
HERE.

First Martin is a full-service commercial real estate firm with an approach focusing on both the big picture and the small details, helping Ann Arbor remain vibrant. We invest in our relationships, balancing a decades-long view of real estate development with service in minutes.

Get in touch today to explore our portfolio of available commercial properties. Visit us at firstmartin.com to view all properties.