



2200 Commonwealth Blvd.

3rd Floor Suite, Ann Arbor, MI



2200 Commonwealth Blvd. is a three story brick office facility with a full glass atrium entrance. The building's contemporary architecture and lush landscaping provide modern executive offices in the thriving Ann Arbor Innovation District.

Located off Plymouth Road in northeast Ann Arbor, ½ mile from US-23, walking distance to Sweetwaters Coffee and Anytime Fitness, and an easy commute from metropolitan Detroit. Over 325,000 SF in eight buildings make up the Ann Arbor Innovation District's East Campus.

Contact us for a tour and additional information. (734) 994-5050
firstmartin@firstmartin.com

Features

- Entire Third Floor
- Ample Parking
- Natural Light throughout
- Operable Windows
- On Site Management
- Well Capitalized Owner

Space Available

- 12,116 SF

Ann Arbor Innovation District (A2ID) Amenities

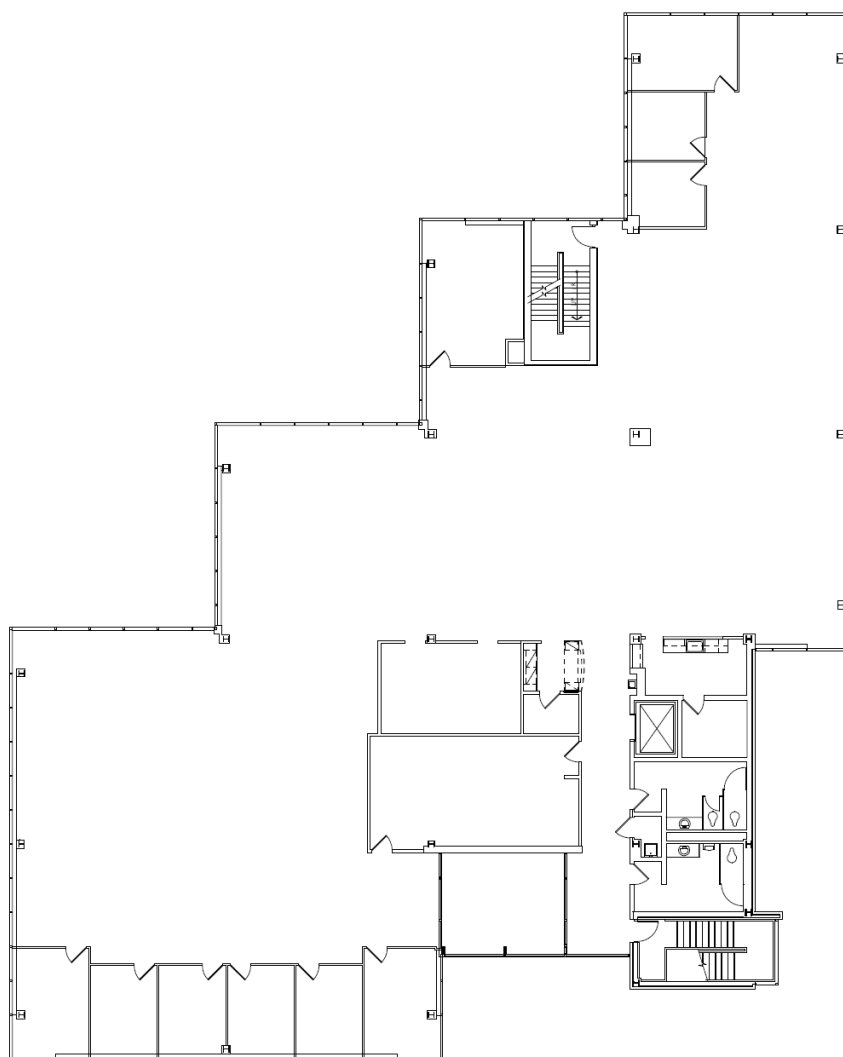
- Pickleball Court
- Outdoor Central Commons Picnic Area with WiFi and Power Outlets
- A2ID Tenants Enjoy Unlimited Access to the 2100 Commonwealth Fitness Center

Area Amenities

- Sweetwaters Coffee & Tea
- Plum Market
- Busch's Fresh Food Market
- United States Postal Service
- The UPS Store



2200 Commonwealth, 3rd Floor



WE ARE
HERE.

First Martin is a full-service commercial real estate firm with an approach focusing on both the big picture and the small details, helping Ann Arbor remain vibrant. We invest in our relationships, balancing a decades-long view of real estate development with service in minutes.

Get in touch today to explore our portfolio of available commercial properties. Visit us at firstmartin.com to view all properties.