



2200 Commonwealth Blvd.

First Floor Suite, Ann Arbor, MI

2200 Commonwealth Blvd. is a three story brick office facility with a full glass atrium entrance. The building's contemporary architecture and lush landscaping provide modern executive offices in Plymouth Park, the heart of Ann Arbor's research corridor.

Located off Plymouth Road in northeast Ann Arbor, ½ mile from US-23 and an easy commute from metropolitan Detroit. Over 325,000 SF in eight buildings make up Plymouth Park.

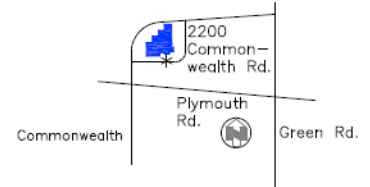
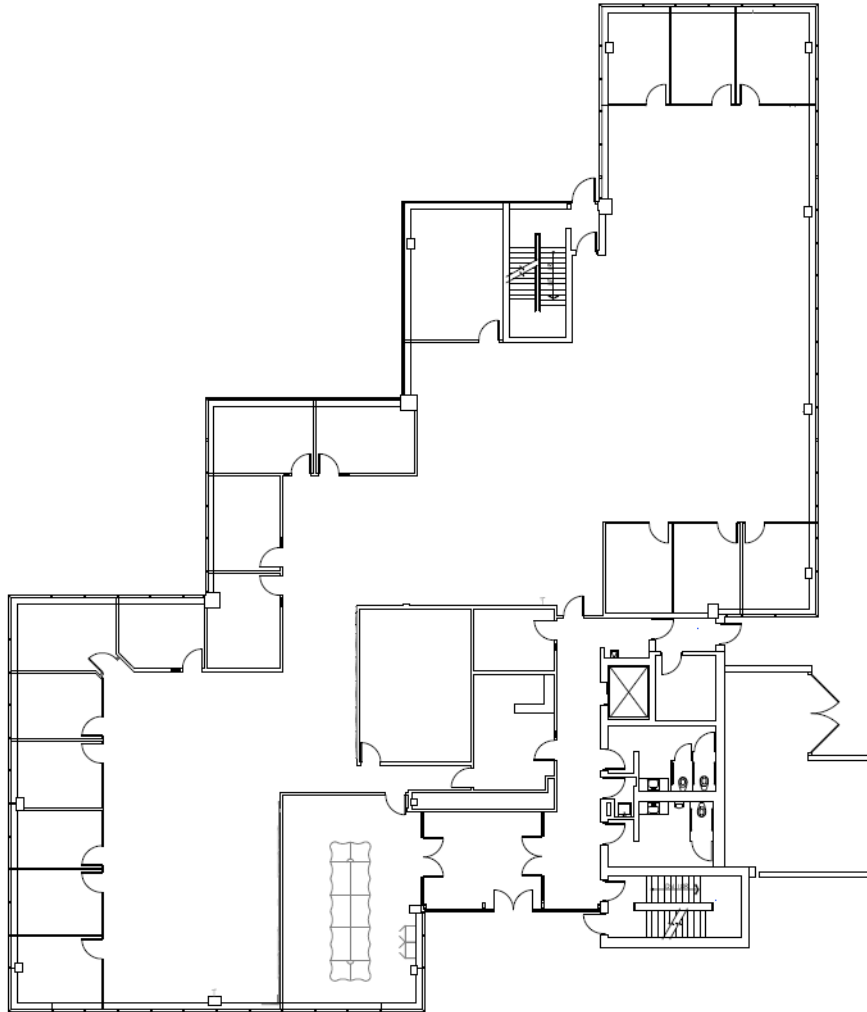
Contact us for a tour and additional information. (734) 994-5050
firstmartin@firstmartin.com

Features

- Entire First Floor
- Turnkey Office Space; Furniture Available
- Ample Parking
- Natural Light throughout

Space Available

- 10,921 SF
- Available Feb. 2019



**2200 Commonwealth Blvd., 1st Floor Suite
10,921 SF**

WE ARE
HERE.

First Martin is a full-service commercial real estate firm with an approach focusing on both the big picture and the small details, helping Ann Arbor remain vibrant. We invest in our relationships, balancing a decades-long view of real estate development with service in minutes.

Get in touch today to explore our portfolio of available commercial properties. Visit us at firstmartin.com to view all properties.