



2001 Commonwealth

Suite 205, Ann Arbor, MI

Private and quiet second floor suite coming available at 2001 Commonwealth Boulevard. This space is perfect for a wide range of small businesses.

2001 Commonwealth Boulevard is a three-story brick office facility with a full glass atrium entrance. The building's contemporary architecture and lush landscaping provide modern executive offices in Plymouth Park, the heart of Ann Arbor's research corridor.

Plymouth Park's exceptional amenities include:

- **Scenic Pond Area:** Enjoy a peaceful view for breaks, lunchtime relaxation, team meetings, or events.
- **Pickleball Court:** Take a break and stay active with outdoor pickleball.
- **Fitness Center:** Fully equipped with convenient 24x7 fitness options exclusively for Plymouth Park guests.

Located off Plymouth Road in northeast Ann Arbor, ½ mile from US-23, and an easy commute from metropolitan Detroit.

Contact us for a tour and additional information. (734) 994-5050
firstmartin@firstmartin.com

WE ARE HERE.

Features

- Operable Windows
- Community Lunch Room
- Ample Parking
- On Site Management
- Well Capitalized Owner

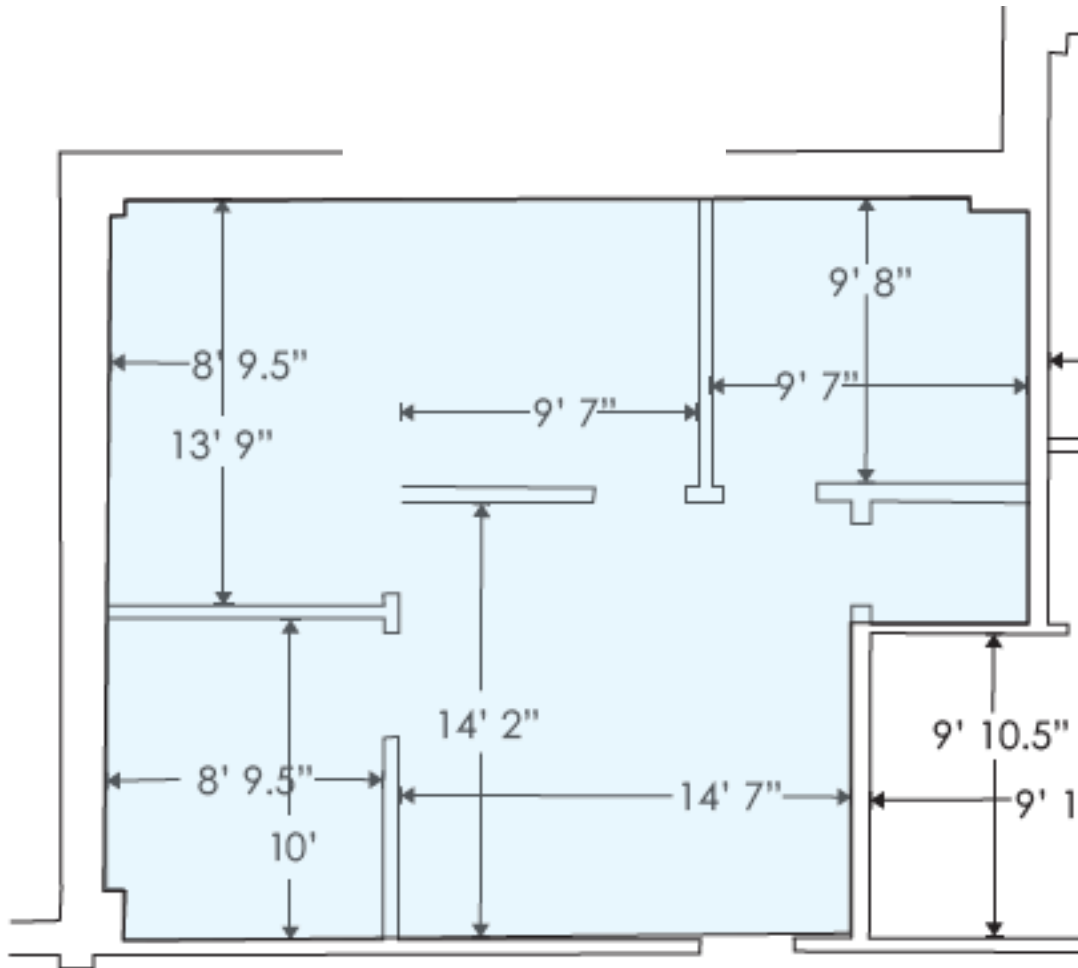
Space Available

- Now Available
- 759 RSF/672 USF

Area Amenities

- Anytime Fitness
- Sweetwaters Coffee & Tea
- Plum Market
- CVS
- Busch's Fresh Food Market
- United States Postal Service
- The UPS Store

FIRSTMARTIN.COM



**2001 Commonwealth Blvd
Suite 205**

WE ARE
HERE.

First Martin is a full-service commercial real estate firm with an approach focusing on both the big picture and the small details, helping Ann Arbor remain vibrant. We invest in our relationships, balancing a decades-long view of real estate development with service in minutes.

Get in touch today to explore our portfolio of available commercial properties. Visit us at firstmartin.com to view all properties.