



2001 Commonwealth

Suite 203, Ann Arbor, MI

2001 Commonwealth Boulevard is a three-story brick office facility with a full glass atrium entrance. The building's contemporary architecture and lush landscaping provide modern executive offices in Plymouth Park, the heart of Ann Arbor's research corridor.

Plymouth Park is located off Plymouth Road in northeast Ann Arbor, ½ mile from US-32 and an easy commute from metro Detroit. Over 325,000 SF in eight buildings make up the Park.

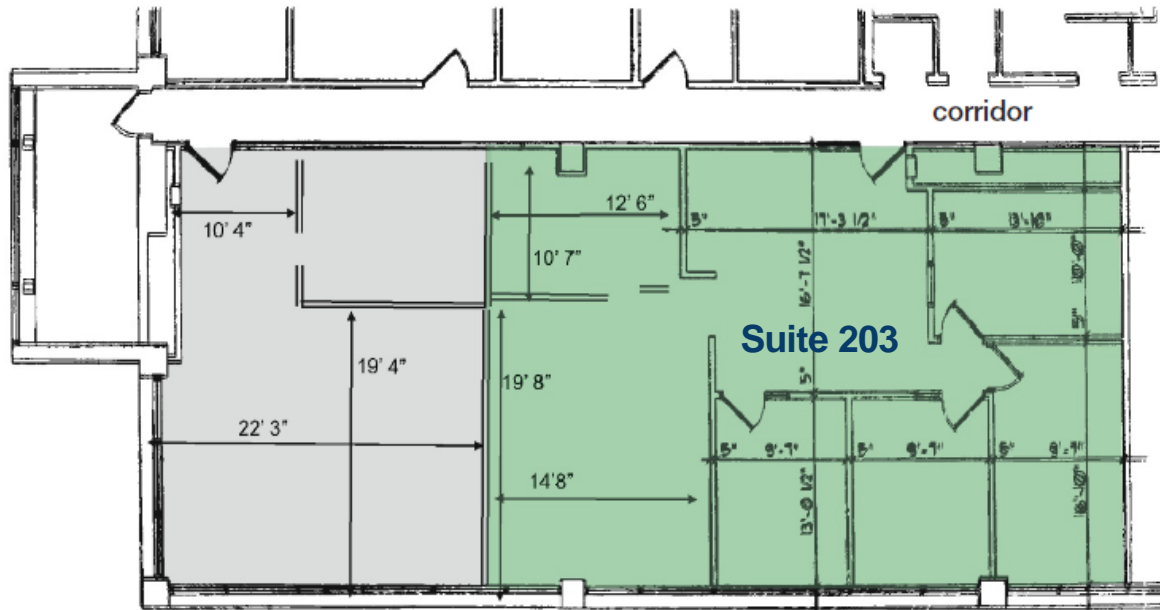
Features

- Operable Windows
- Ample Parking

Space Available

- 1,516 USF
- 1,343 RSF

Contact us for a tour and additional information. (734) 994-5050
firstmartin@firstmartin.com



2001 Commonwealth, Suite 203
1,516 SF/1,343 USF

WE ARE
HERE.

First Martin is a full-service commercial real estate firm with an approach focusing on both the big picture and the small details, helping Ann Arbor remain vibrant. We invest in our relationships, balancing a decades-long view of real estate development with service in minutes.

Get in touch today to explore our portfolio of available commercial properties. Visit us at firstmartin.com to view all properties.