



## 2001 Commonwealth

1st Floor Suite, Ann Arbor, MI

2001 Commonwealth Boulevard is a three-story brick office facility of approximately 25,000 square feet with a full glass atrium entrance.

Located in Plymouth Park off Plymouth Road in northeast Ann Arbor, ½ mile from US-32 and an easy commute from metro Detroit.

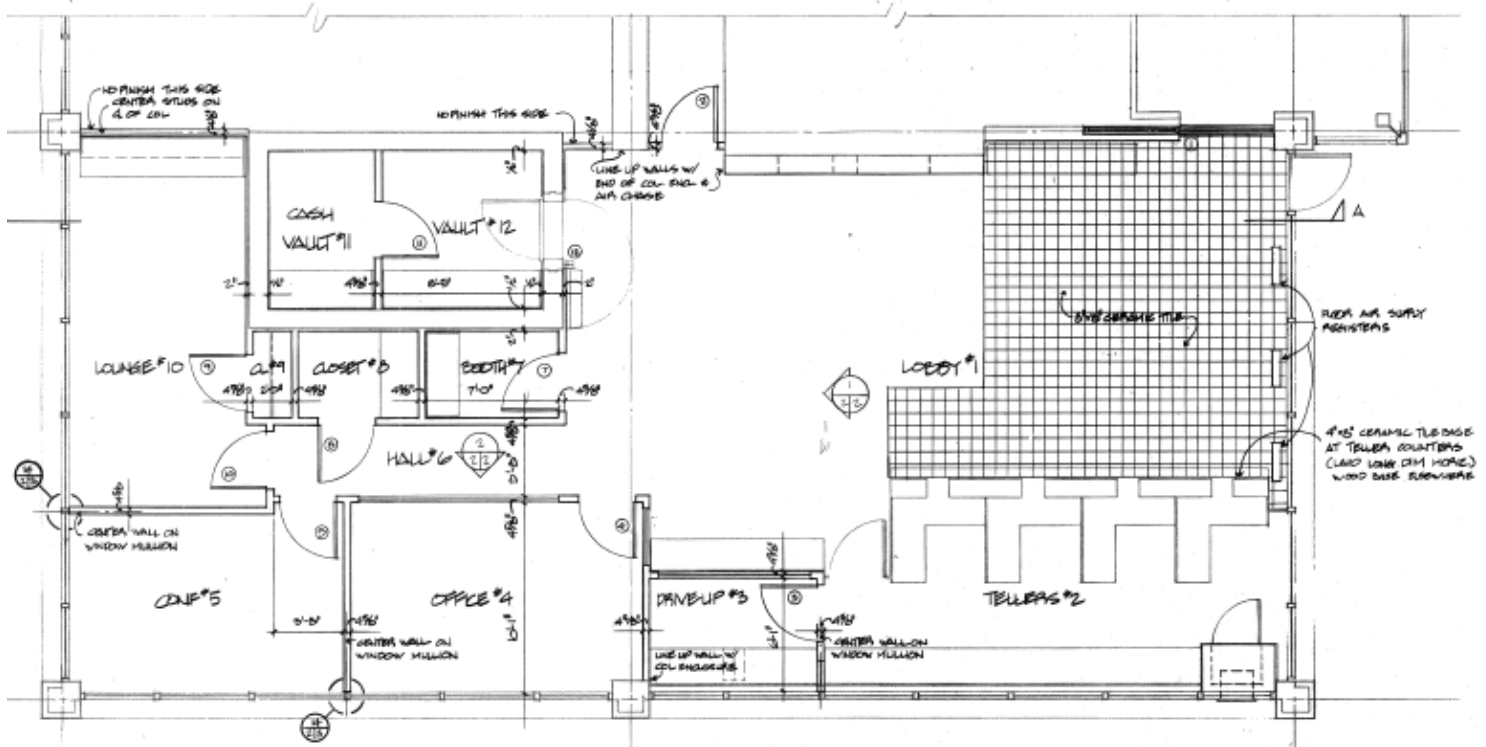
### Features

- Ample Parking

### Space Available

- 2,482 USF
- 2,642 RSF

**Contact us for a tour and additional information. (734) 994-5050**  
**firstmartin@firstmartin.com**



**2001 Commonwealth, 1<sup>st</sup> Floor Suite**  
**2,482 USF/2,642 RSF**

WE ARE  
HERE.

First Martin is a full-service commercial real estate firm with an approach focusing on both the big picture and the small details, helping Ann Arbor remain vibrant. We invest in our relationships, balancing a decades-long view of real estate development with service in minutes.

Get in touch today to explore our portfolio of available commercial properties. Visit us at [firstmartin.com](http://firstmartin.com) to view all properties.

