



Exceptional Properties, Extraordinary Service.

Retail Space - 3965 South State St., Ann Arbor MI



**3965 South State
Ann Arbor, MI**

Retail located at the northeast corner of South State Street and Ellsworth Road. 0.5 mile south of I-94 and 0.7 mile south of Briarwood Mall.

SPACE AVAILABLE

Retail Space:

1,479 - 8,481 sf
51,000 daily traffic count
112 parking spaces, 1.82 ac.
1 Entrance off of South State Street and 2 Entrances from Ellsworth.
Drive-through available.
Immediate occupancy

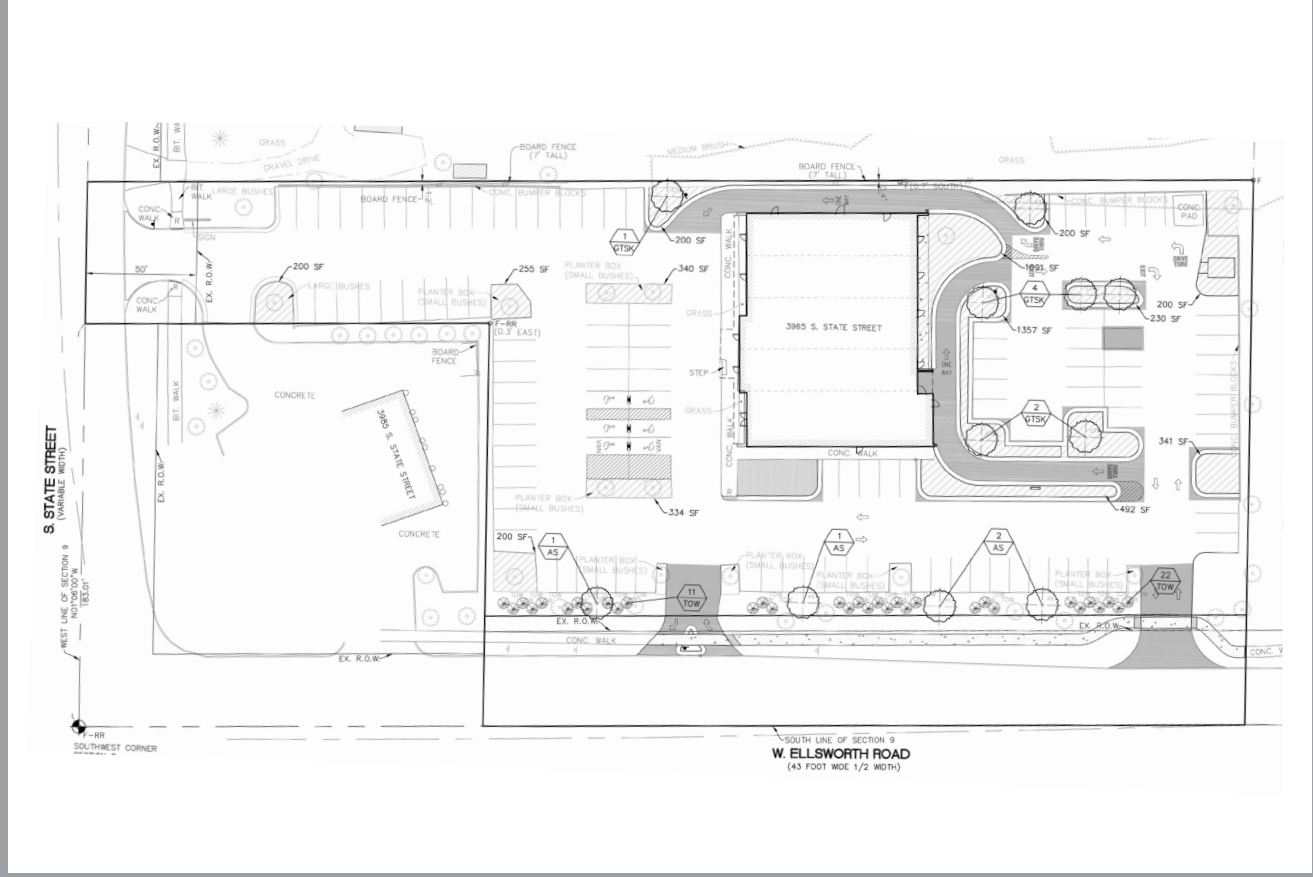
Ann Arbor. A City of Innovation. A World of Opportunity.

Ann Arbor is one of America's great cities, and First Martin has specialized in commercial property in and around the city for 40 years. We would be happy to show you our portfolio of available commercial properties. Tel: 734-994-5050 or send us an email at firstmartin.com to find out how we can help your organization succeed.



Exceptional Properties, Extraordinary Service.

Retail Space - 3965 South State St., Ann Arbor MI



Ann Arbor. A City of Innovation. A World of Opportunity.

Ann Arbor is one of America's great cities, and First Martin has specialized in commercial property in and around the city for 40 years. We would be happy to show you our portfolio of available commercial properties. Tel: 734-994-5050 or send us an email at firstmartin.com to find out how we can help your organization succeed.