



Exceptional Properties, Extraordinary Service.

Research and Office Space - 2311 Green Rd., Ann Arbor, MI



**2311 Green Road
Ann Arbor, MI 48104**

2311 Green Road, located in Plymouth Park, is a 90,000 square foot single story, multi-tenant office and research building providing four overhead doors (one with truck well and one with dock leveler), high ceilings (14 feet) and ample on-site parking. Plymouth Park, the heart of Ann Arbor's research corridor. This 43-acre office and research development is located on Plymouth Road in northeast Ann Arbor, 1/2 mile from US-23 and an easy commute from metropolitan Detroit. Over 325,000 sq. ft. in eight buildings make up the Park.

SPACE AVAILABLE

USF: 7,778

RSF: 7,778

Immediate occupancy

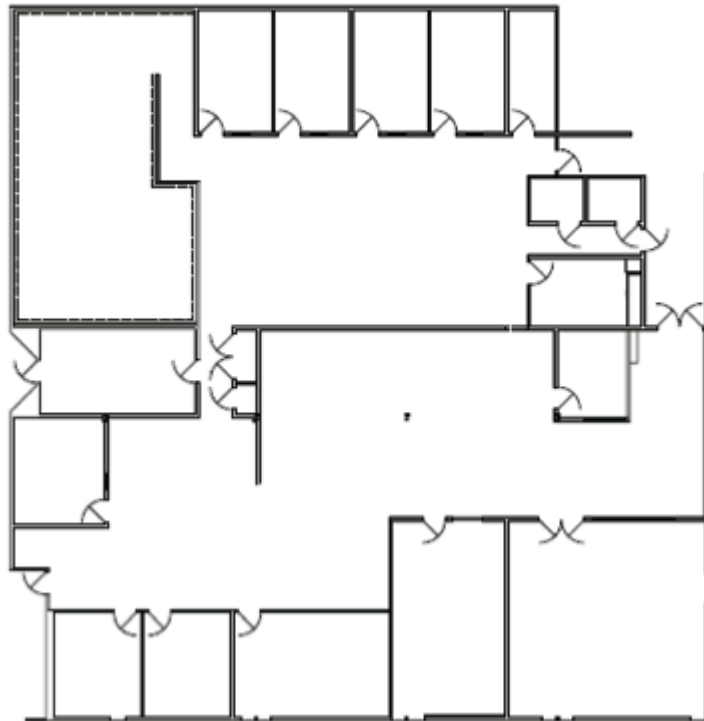
Ann Arbor. A City of Innovation. A World of Opportunity.

Ann Arbor is one of America's great cities, and First Martin has specialized in commercial property in and around the city for 40 years. We would be happy to show you our portfolio of available commercial properties. Tel: 734-994-5050 or send us an email at firstmartin.com to find out how we can help your organization succeed.



Exceptional Properties, Extraordinary Service.

Research and Office Space - 2311 Green Rd., Ann Arbor, MI



Ann Arbor. A City of Innovation. A World of Opportunity.

Ann Arbor is one of America's great cities, and First Martin has specialized in commercial property in and around the city for 40 years. We would be happy to show you our portfolio of available commercial properties. Tel: 734-994-5050 or send us an email at firstmartin.com to find out how we can help your organization succeed.