



**Exceptional Properties, Extraordinary Service.**

**Office Space - 2100 Commonwealth Blvd., Ann Arbor, MI**



**2100 Commonwealth Blvd.  
Ann Arbor, MI 48104**

2100 Commonwealth Blvd. is a three story brick office facility with a full glass atrium entrance. The building's contemporary architecture and lush landscaping provide modern executive offices in Plymouth Park, the heart of Ann Arbor's research corridor. This 43-acre office and research development was first conceived in 1981 as a joint venture between First Martin and McDonnell Douglas Corporation. Located on Plymouth Road in northeast Ann Arbor, 1/2 mile from US-23 and an easy commute from metropolitan Detroit. Over 325,000 sq. ft. in eight buildings make up the Park.

**SPACE AVAILABLE**

**2nd Floor:**

RSF: 3,444

USF: 3,080

Immediate occupancy

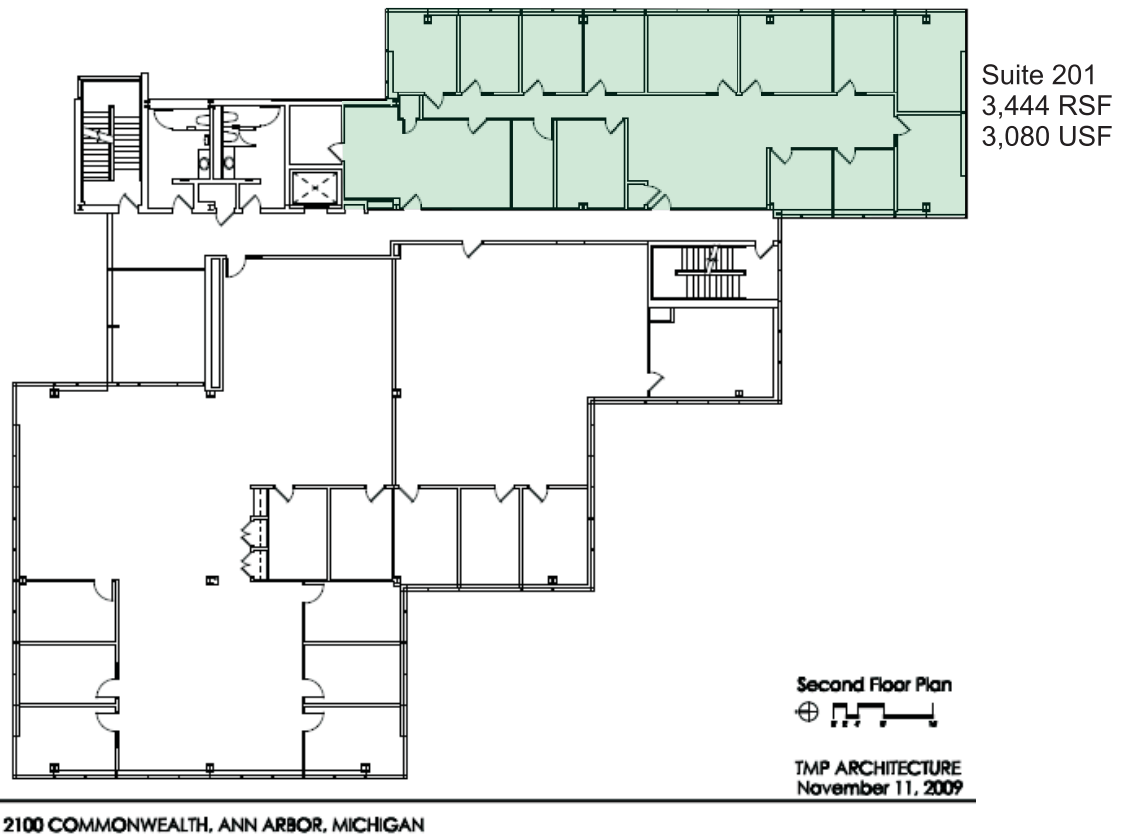
**Ann Arbor. A City of Innovation. A World of Opportunity.**

Ann Arbor is one of America's great cities, and First Martin has specialized in commercial property in and around the city for 40 years. We would be happy to show you our portfolio of available commercial properties. Tel: 734-994-5050 or send us an email at [firstmartin.com](http://firstmartin.com) to find out how we can help your organization succeed.



Exceptional Properties, Extraordinary Service.

Office Space - 2100 Commonwealth Blvd., Ann Arbor, MI



Ann Arbor. A City of Innovation. A World of Opportunity.

Ann Arbor is one of America's great cities, and First Martin has specialized in commercial property in and around the city for 40 years. We would be happy to show you our portfolio of available commercial properties. Tel: 734-994-5050 or send us an email at [firstmartin.com](http://firstmartin.com) to find out how we can help your organization succeed.