



Exceptional Properties, Extraordinary Service.

Office Space - 2001 Commonwealth Blvd. Ann Arbor, MI



**2001 Commonwealth Blvd.
Ann Arbor, MI**

2001 Commonwealth Blvd. (at Plymouth Rd.) is a three story brick office facility with a full glass atrium entrance. The building's contemporary architecture and lush landscaping provide modern executive offices in Plymouth Park, the heart of Ann Arbor's research corridor. This 43-acre office and research development is located on Plymouth Road in northeast Ann Arbor, 1/2 mile from US-23 and an easy commute from metropolitan Detroit. Over 325,000 sq. ft. in eight buildings make up the Park.

SPACE AVAILABLE

Suite 204

USF: 734

RSF: 848

Suite 205

USF: 672

RSF: 759

Immediate occupancy

Suites can be combined.

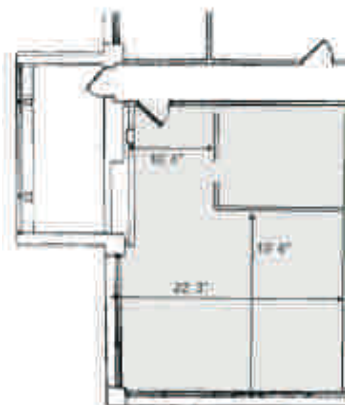
Ann Arbor. A City of Innovation. A World of Opportunity.

Ann Arbor is one of America's great cities, and First Martin has specialized in commercial property in and around the city for 40 years. We would be happy to show you our portfolio of available commercial properties. Tel: 734-994-5050 or send us an email at firstmartin.com to find out how we can help your organization succeed.

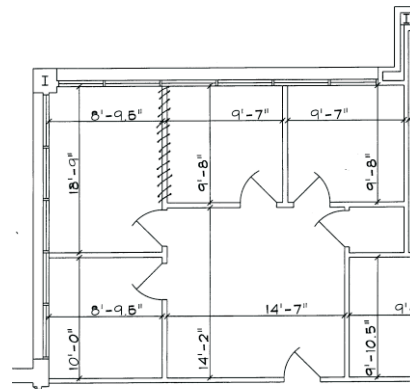


Exceptional Properties, Extraordinary Service.

Office Space - 2001 Commonwealth Blvd. Ann Arbor, MI



Suite 204
USF: 734
RSF: 848



Suite 205
USF: 672
RSF: 759

Ann Arbor. A City of Innovation. A World of Opportunity.

Ann Arbor is one of America's great cities, and First Martin has specialized in commercial property in and around the city for 40 years. We would be happy to show you our portfolio of available commercial properties. Tel: 734-994-5050 or send us an email at firstmartin.com to find out how we can help your organization succeed.